



Christening "The Queen of Kingsland"  
 L. to r.: Lester Inman, Bill McGee, Sue Stumfoll, M.B. Virdell, Ola Mae Virdell, Jim Stumfoll, Bob Scott, Members of the LHS Band and Linda Bigger Tow "Miss Llano Jaycee" in foreground.

## Kingsland Ferry

On March 15, 1961, before the Kingsland Bridge was constructed across the Llano River arm of Lake Lyndon B. Johnson, an eight car ferry connected the two shores.

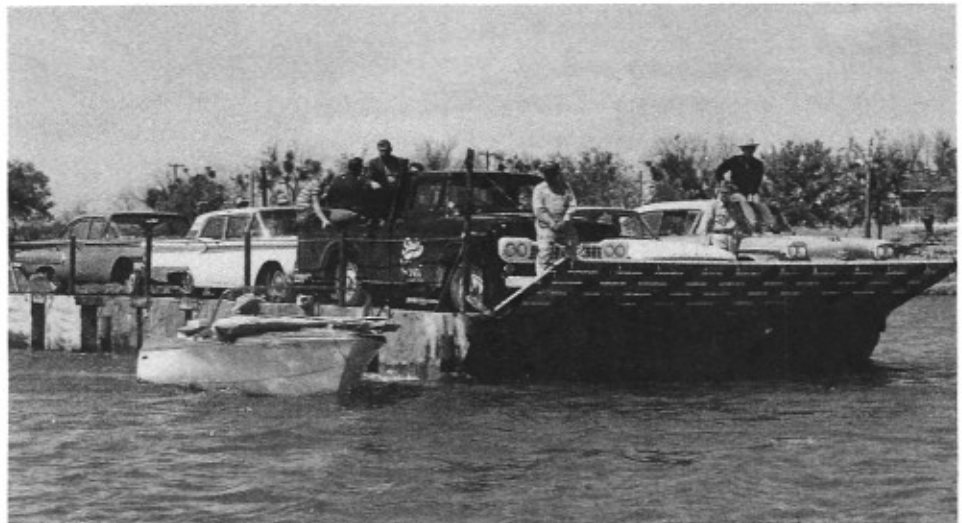
Owned by Jim Stumfoll and the late M. B. Virdell, the "Queen of Kingsland" was formally dedicated on April 2, 1961. It was considered to be the only ferry across a fresh water lake west of the Mississippi River.

Llano Chamber of Commerce president, the late Lester Inman, was master of ceremonies and Kingsland Chamber of Commerce president, Bill McGee, welcomed the visitors.

There was a ribbon cutting ceremony by Judge R.P. McWilliams and the ferry was christened by Linda Bigger (now

Mrs. Billy Tow) who at that time was Miss Llano Jaycee. Several members of the Llano High School Band played for the dedication.

The ferry operated until construction began on the bridge in 1968, to connect Kingsland to State Highway 71, via Farm Road 2900 and Farm Road 2233.



Crossing the Llano River Arm on Lake LBJ on the Queen of Kingsland